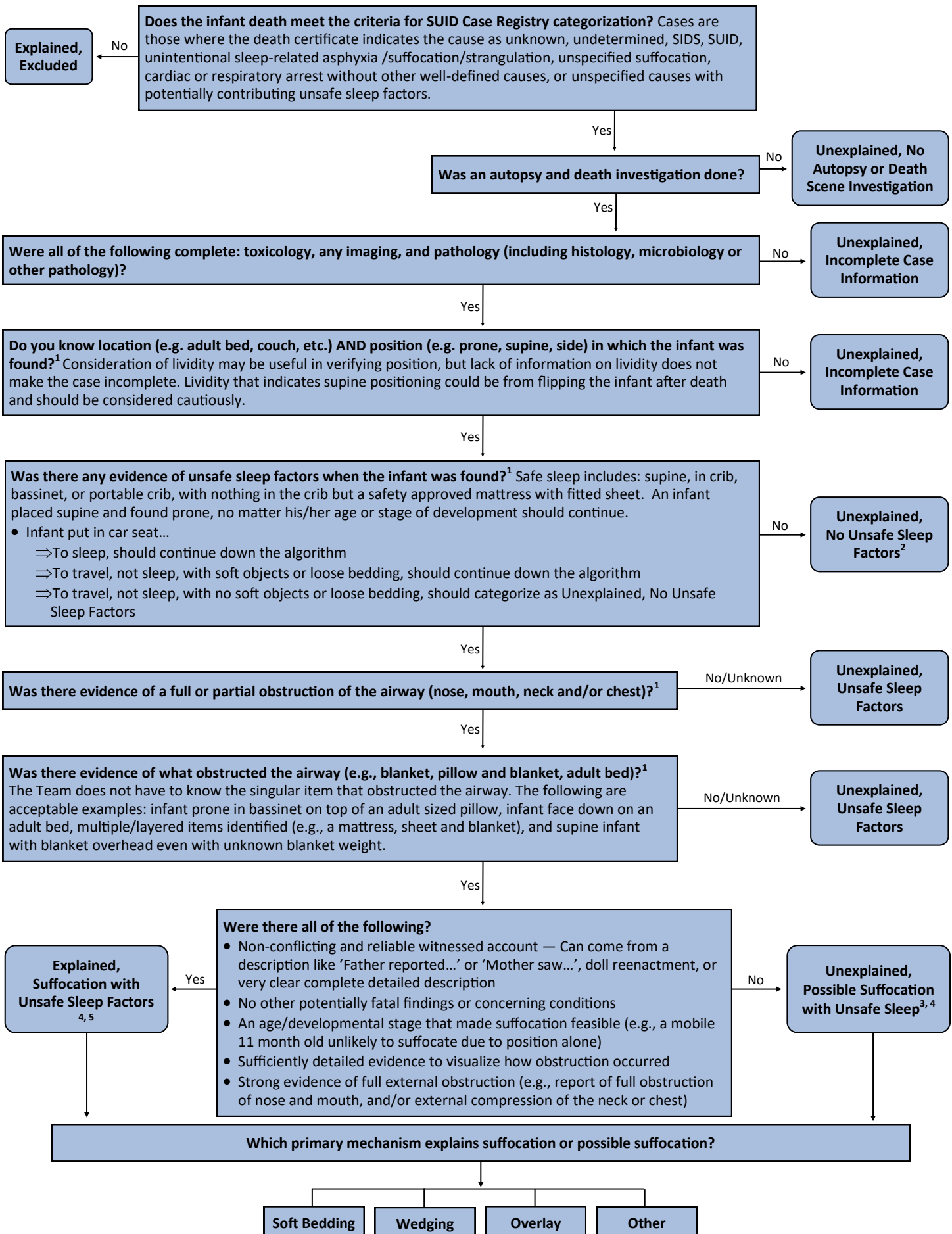


SUID Categorization Guide



Footnotes

1. When there is conflict:
 - Use the expertise of your multi-disciplinary team and ALL of the evidence to figure out what really happened.
 - If there is enough evidence for the team to resolve the conflict, then document the team's decision in the narrative and continue down the algorithm.
 - If the evidence does not reveal a clear resolution, then document the sustaining conflict and treat it as an unknown.
 - Refrain from making assumptions, err on the side of unknown.
2. Includes infants who were witnessed going unresponsive.
3. Includes infants whose airways were obstructed by a Consumer Product Safety Commission approved mattress used as recommended in a crib, portable crib, or bassinet.
4. Needs to be assigned at least one mechanism using the following definitions (the following are examples, not a comprehensive list):
 - **Soft bedding:** when an infant's airway is obstructed by a blanket, sheet, pillow, couch or recliner cushions, or other soft objects of loose bedding that are part of the immediate sleep environment.
 - ⇒ Nose and/or mouth obstructed at the intersection of soft bedding (e.g., where a pillow and mattress meet, where the back and seat of a couch meet)
 - **Wedging:** when an infant's airway is obstructed as a result of being stuck or trapped between inanimate objects.
 - ⇒ Wedged with face clear (e.g., in gap, face above mattress), chest/neck obstruction only
 - **Overlay:** when a person rolls on top of or against an infant obstructing the infant's airway.
 - ⇒ Overlay with face clear (obstructed chest/neck only)
 - ⇒ Face into person with or without chest/neck obstruction
 - ⇒ Infant pinned between person and couch, facing person
 - ⇒ *Note: Surface sharing only is not enough evidence for overlay. An overlay needs to be witnessed (e.g., someone waking up on top of an infant, or someone seeing someone else on top of an infant).*
 - **Other:** when an infant's airway is obstructed by something in the sleep environment other than soft bedding, overlay or wedging like a plastic bag.
 - ⇒ *Note: Other should not be selected for unsafe sleep factors like prone positioning or impaired caregivers.*
 - **Multiple mechanisms:**
 - ⇒ **Wedging and Soft Bedding**
 - * Wedged with face into soft bedding (mattress, pillow, blankets), nose and mouth obstructed
 - * Wrapped/entangled in blankets and wedged
 - ⇒ **Overlay and Soft Bedding**
 - * Overlay with nose/mouth obstructed by soft bedding (mattress, pillow, blankets)
 - * Infant pinned between person and couch, facing couch
5. Examples include:
 - A 1-month-old infant found face down in a pillow with her nose and mouth fully obstructed.
 - A 2-month-old infant found with her head and face wedged between the cushions at the back of the sofa.
 - A 4-month-old infant found lifeless in a twin bed with his head and body underneath his mother.

Reference: Shapiro-Mendoza CK, Camperlengo L, Ludvigsen R, et al. Classification system for the Sudden Unexpected Infant Death Case Registry and its application. *Pediatrics*. 2014;134:e210-e219.